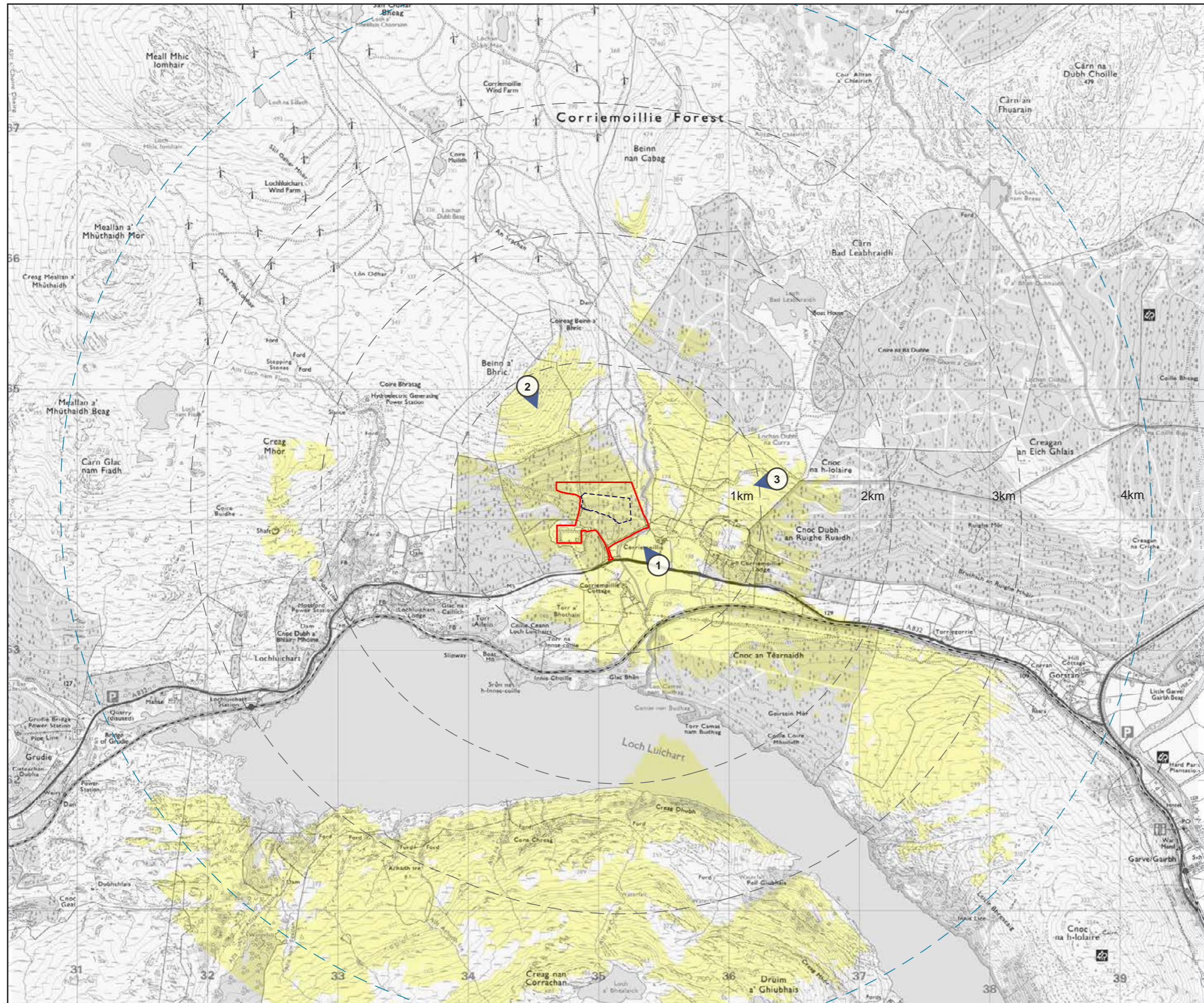







Figure 1a - Zone of Theoretical Visibility and Viewpoints



**Key**

-  Site location
-  Development Area
-  4 km Study Area
-  Predicted Visibility
-  Viewpoints:

1. View northwest from the A832, at junction to Corriemoillie Farm
2. View south from Beinn a' Bhric
3. View west from farm track to Loch Bad Leabhraidh

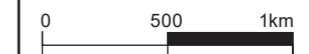
**Notes:**

The calculations of this map are based on the 'bare earth' model of the landform and do not allow for any effects of screening from obstacles such as buildings and vegetation. The landform data was taken from Ordnance Survey Terrain 5 digital terrain model (gridded height data at 5m intervals).

**Figure Data:**

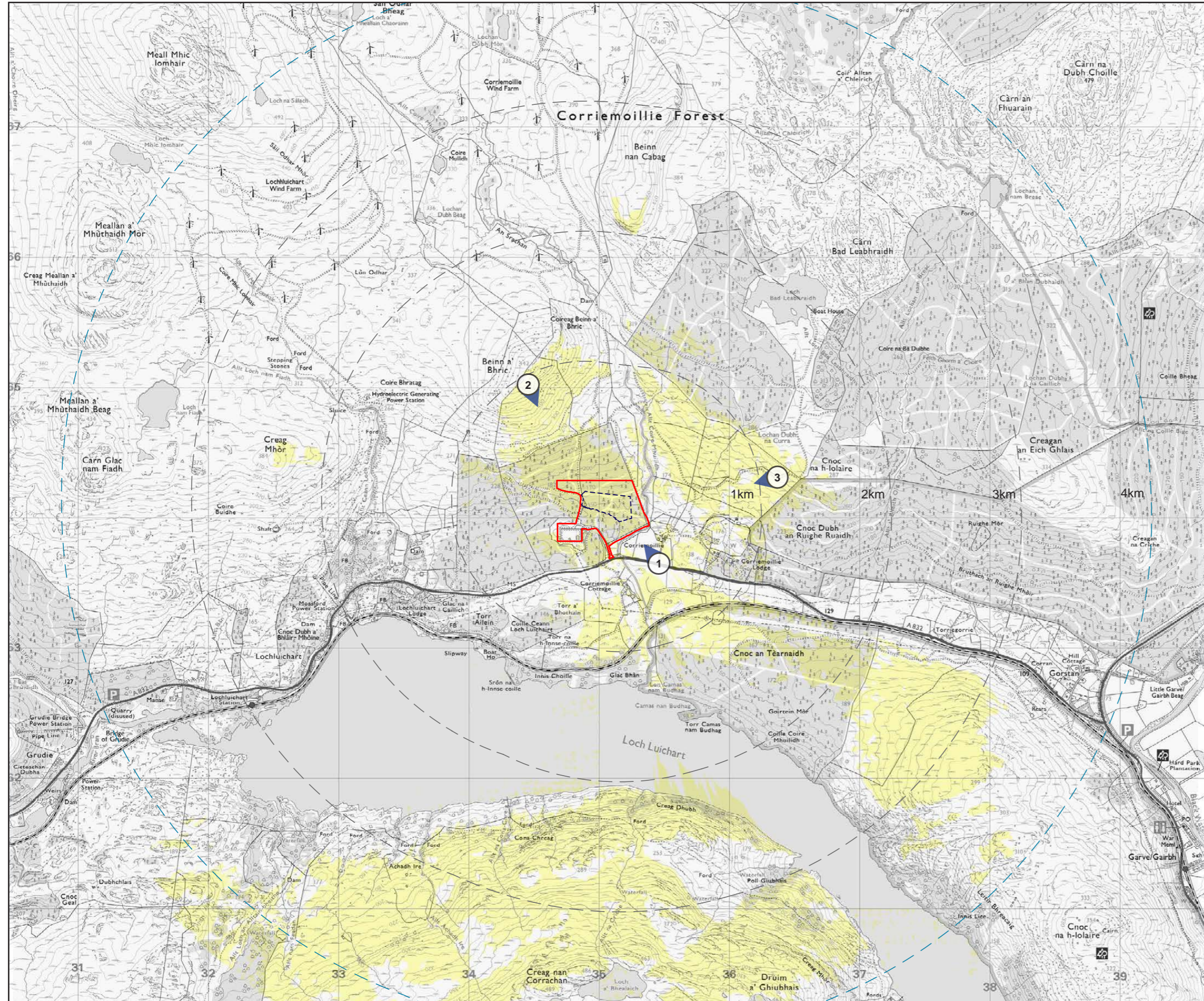
This figure has been based on the following height:

Substation: 8.0m  
Battery units: 3.2m



Date	Scale@A3	Produced By	Checked By	Rev.
07/11/24	1:30 000	OM	NH	B

Figure 1b - Zone of Theoretical Visibility including Building and Vegetation Screening



**Key**

- Site location
- Development Area
- 4 km Study Area
- Predicted Visibility
- Viewpoints:
  1. View northwest from the A832, at junction to Corriemoillie Farm
  2. View south from Beinn a' Bhric
  3. View west from farm track to Loch Bad Leabhraidh

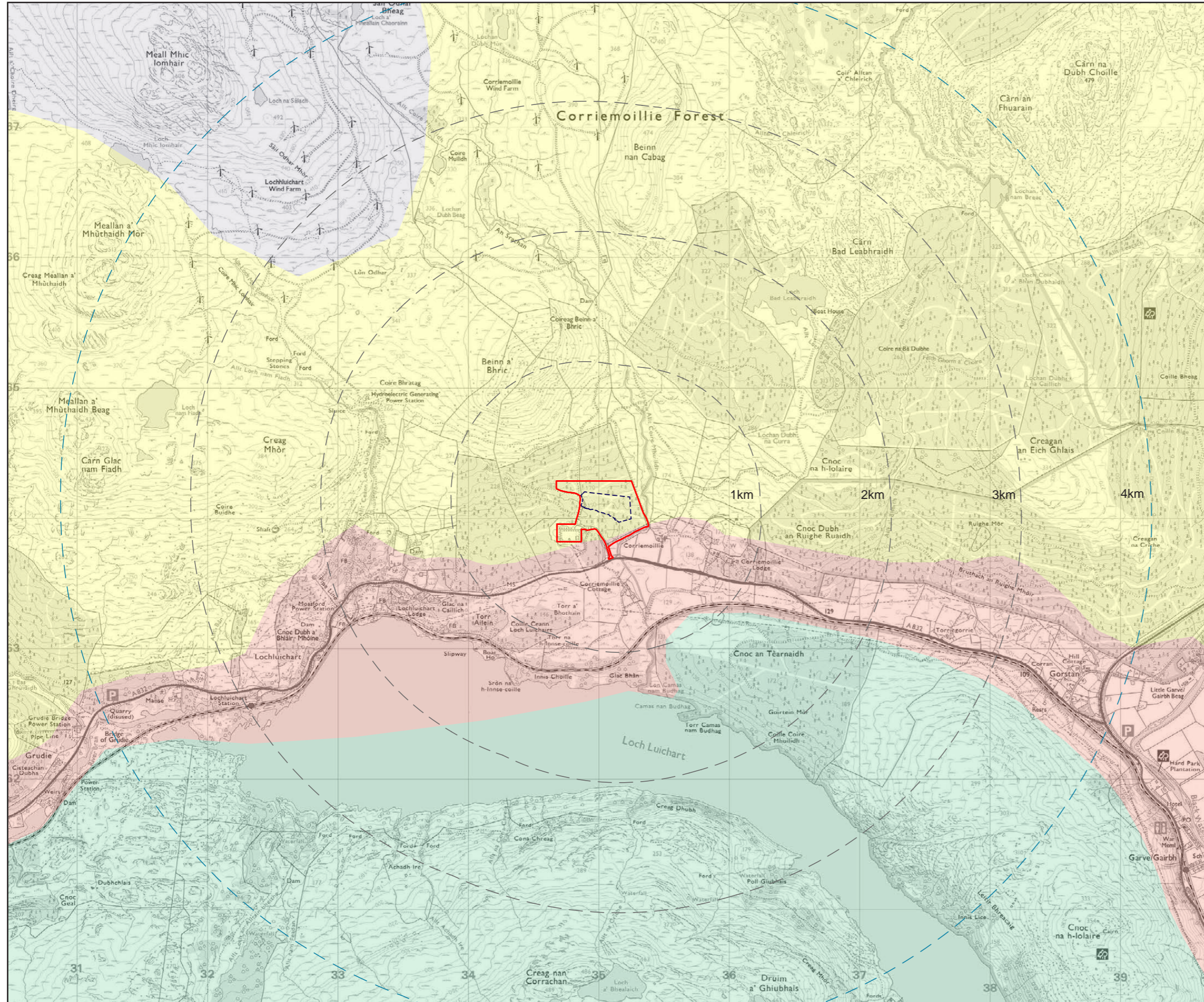
**Notes:**  
 The calculations of this map incorporate the potential screening influence of screening from obstacles such as buildings and vegetation based on the highest resolution terrain elevation data. The landform data was taken from Photography Derived 2m Digital Surface Model (gridded height data at 2m intervals).

**Figure Data:**  
 This figure has been based on the following height:  
 Substation: 8.0m  
 Battery units: 3.2m




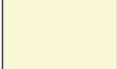
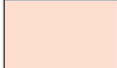


0 500 1km

Date	Scale@A3	Produced By	Checked By	Rev.
07/11/24	1:30 000	OM	NH	B

Figure 2 - Landscape Character



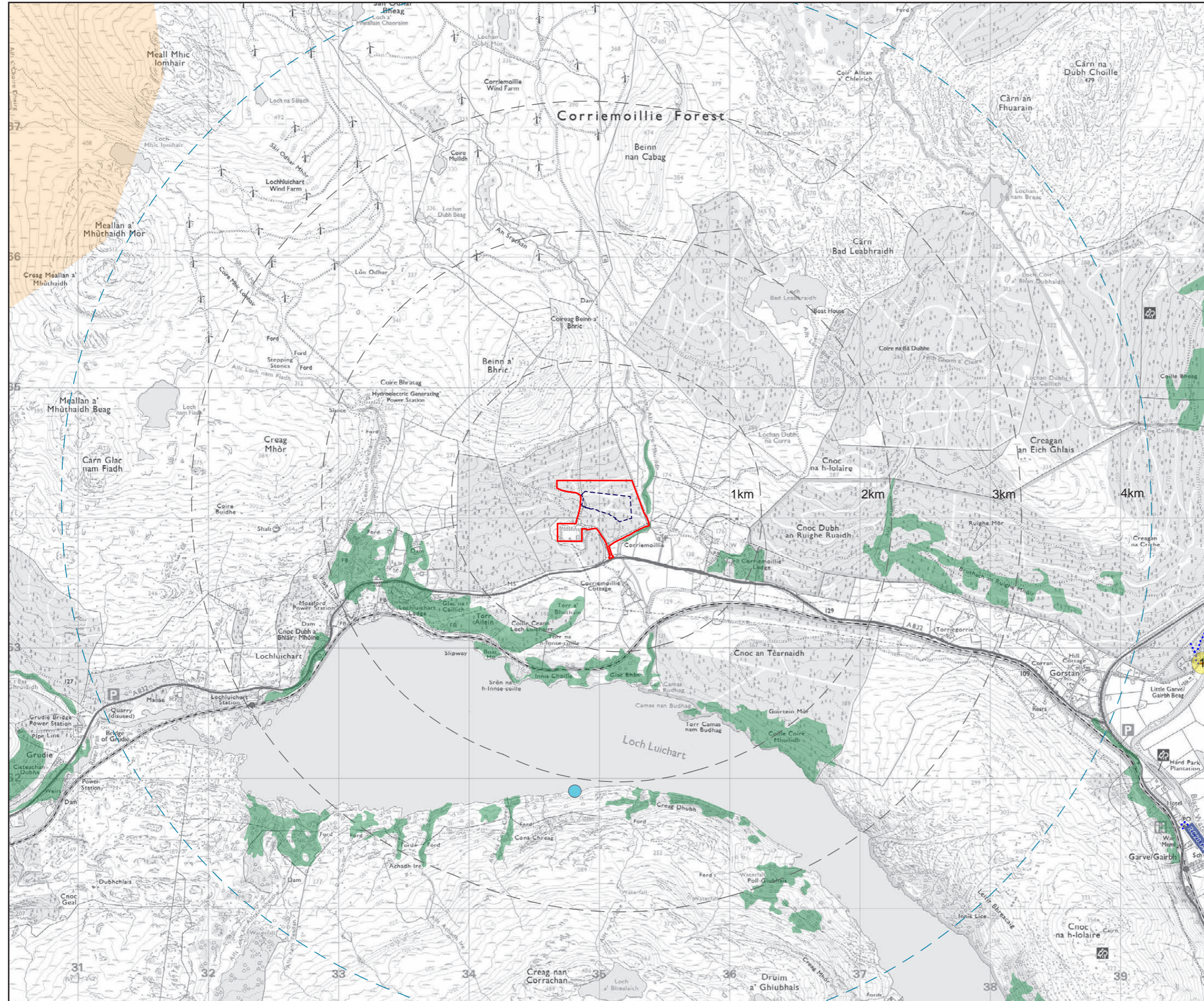
**Key**

-  Site location
-  Development Area
-  4 km Study Area
-  Rounded Hills and Moorland Slopes - Ross & Cromarty LCT
-  Strath - Ross & Cromarty LCT
-  Rounded Rocky Hills - Ross & Cromarty LCT
-  Rounded Mountain Massif LCT





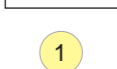



Date	Scale@A3	Produced By	Checked By	Rev.
07/11/24	1:30 000	OM	NH	A

Figure 3 - Landscape Designations, Ancient Woodland and Visual Receptors



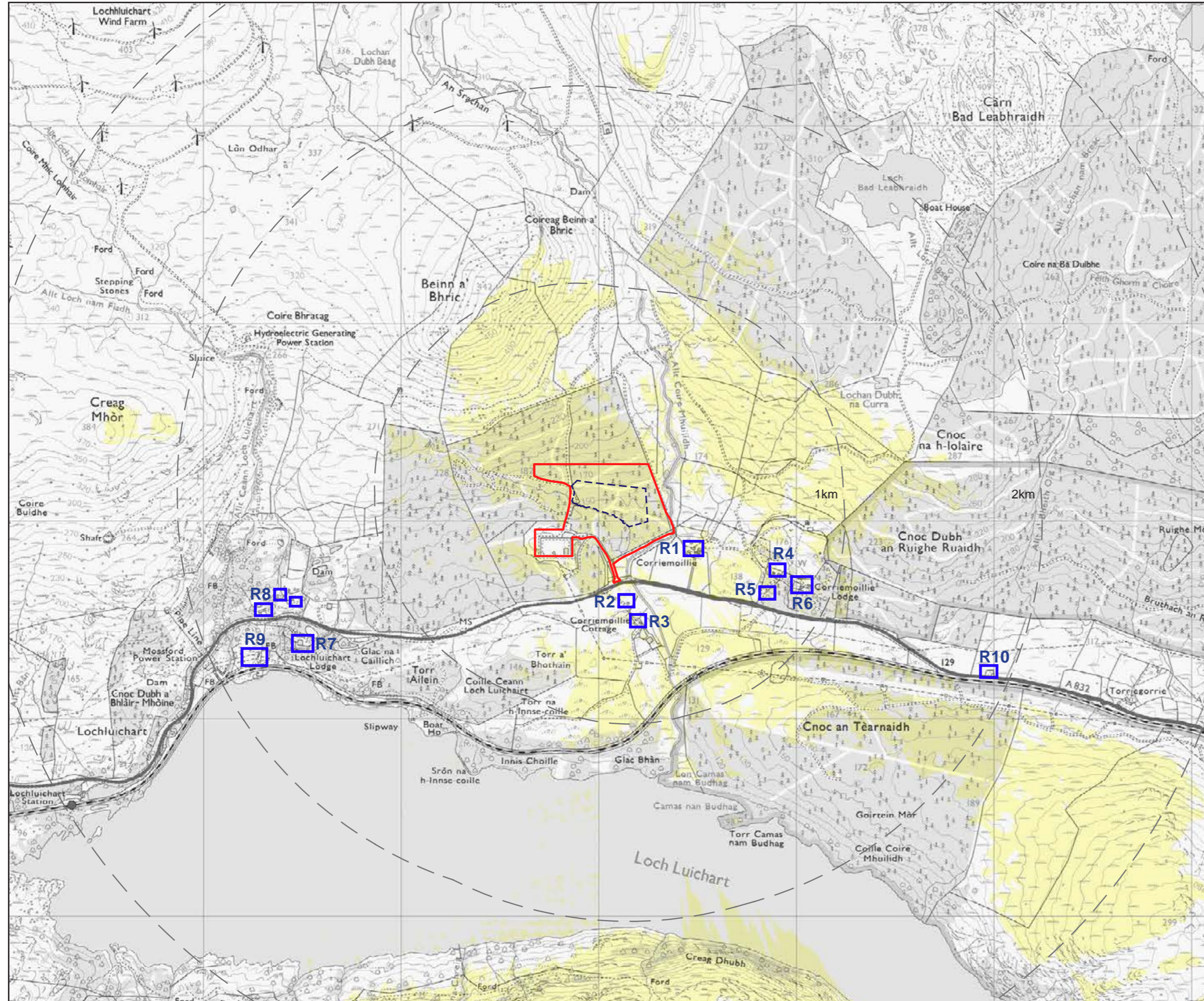
**Key**

-  Site location
-  Development Area
-  4 km Study Area
-  Ancient Woodland
-  Wild Land  
*Fisherfield - Letterewe - Fannichs*
-  Core Path  
*RC20.04*
-  Loch Luichart Fishing
-  Scheduled Monument:  
*Little Garve, Bridge Over Black Water*

0 500 1km

Date 07/11/24 Scale@A3 1:30 000 Produced By OM Checked By NH Rev. A

Figure 4 - Residential Receptors



**Key**

- Site location
- Development Area
- 1 km radii
- Predicted Visibility
- Residential Property:
  - R1 Corriemoillie Farm
  - R2 Glenview
  - R3 Corriemoillie Croft
  - R4 Gardener's Cottage
  - R5 Tigh Tioram
  - R6 Corriemoillie Lodge
  - R7 Lochluichart Lodge
  - R8 Ardachy, Forest Hill and Burnside
  - R9 Gardens Cottage and Druum Eorna
  - R10 Strathmore House

**Notes:**  
 The calculations of this map incorporate the potential screening influence of screening from obstacles such as buildings and vegetation based on the highest resolution terrain elevation data. The landform data was taken from Photography Derived 2m Digital Surface Model (gridded height data at 2m intervals).

**Figure Data:**  
 This figure has been based on the following height:  
 Substation: 8.0m  
 Battery units: 3.2m

0 500m 1km

Date 07/11/24 Scale@A3 1:20 000 Produced By OM Checked By NH Rev. B